

DATA STATION X-SERIE COMMERCIAL

*Item No.: 592.724, 592.724 001,
592.724 002, 592.724 003*



Actual product may vary

DESCRIPTION OF FUNCTIONS

The measuring equipment control cabinet for centrally recording and processing all system data in your commercial PV power plant.

- Centralized data acquisition and communication with VCOM
- Depending on the system topology blue'Logs, MX-Modules and further components can be built in if required
- Cost-optimized all-in-one solution due to direct connection of communication lines
- Application area Indoor and Outdoor for moderate climate conditions

TECHNICAL DATA

Supply voltage:	100 V AC to 230 V AC / 16 A
Current consumption without ext. devices:	Max. 0.59 A
Protection class:	IP 65
UV resistant:	Yes
Operating temperature:	-15 °C to 40 °C
Storage temperature:	-20 °C to 60 °C
Dimensions (H x W x D):	615 x 415 x 230 mm
Weight:	14.1 kg
Installation:	Wall installation

INTERNAL POWER SUPPLY

Components:	Power supply unit 24 V DC ± 1 %, 2.5 A
Nominal input voltage range AC:	100 V AC to 240 V AC
Input voltage range AC:	85 V AC to 264 V AC
Efficiency:	> 90 % (for 230 V AC and nominal values)

Components:	UPS with integrated power storage 24 V DC, 2.5 A
Input voltage DC:	24 V DC
Capacity:	0.8 Ah
Efficiency:	> 95 % (Mains operation, with charged power storage)

CABLE SCREW CONNECTIONS

1 x M25 incl. splitted sealing insert (9 mm bis 17 mm / 4 mm bis 6 mm) for Ethernet
 1 x M20 (6 mm bis 13 mm) for Power supply
 7 x M16 (4,5 mm bis 10 mm) for Sensors

COMMUNICATION

Type:	RS485 Modbus / 2 wires Ethernet
-------	------------------------------------

EQUIPMENT

Power supply unit 24 V DC, 2.5 A

UPS with integrated power storage 24 V DC, 2.5 A, 0.8 Ah

Top-hat rail socket (optional)

- Socket extension GER (Item No.: 592.724 100)
- Socket extension UK (Item No.: 592.724 101)
- Socket extension ITA (Item No.: 592.724 102)
- Socket extension USA (Item No.: 592.724 103)
- Socket extension IN (Item No.: 592.724 104)
- Socket extension FR (Item No.: 592.724 105)
- Socket extension CH (Item No.: 592.724 106)

Pre-wired for:

- 1 blue'Log basic module (XM)
- Up to 4 extension modules (max. 2 MX-Module Multi I/O)

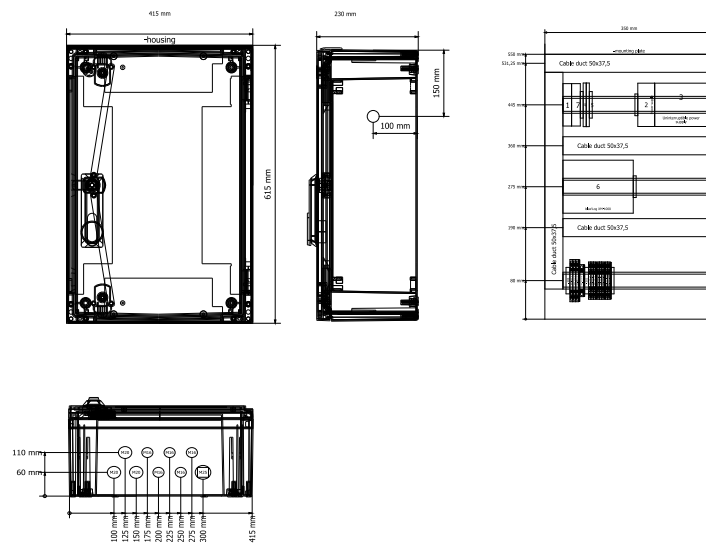
If required, additional components can be implemented as a variant or special model.

VARIANTS

The following variants are available as pre-wired measuring equipment control cabinets:

- Data Station X-Serie Commercial, pre-wired for switch (Artikel-Nr.: 592.724 001)
- Data Station X-Serie Commercial, pre-wired for router (Artikel-Nr.: 592.724 002)
- Data Station X-Serie Commercial, pre-wired for switch and router (Artikel-Nr.: 592.724 003)

SCHEMATIC DIAGRAMS



meteocontrol GmbH | Spicherer Straße 48 | 86157 Augsburg | Germany | Telephone +49 (0)821 34666 - 0 | Fax +49 (0)821 34666 - 11
 E-mail info@meteocontrol.com | Web www.meteocontrol.com